

Sage Line 500 - Web Portal

Access to information and applications from a Portal is a key mechanism to allow your business to gain competitive advantage. The information provided in a portal is tailored to your specific needs, providing a clear view of your business allowing you to make faster informed decisions than your competitors.

However, presenting information in a portal is only part of the advantage and maximum benefit is gained when you can also run your business applications from the same portal. You are then able to easily identify critical information, and then immediately utilise the business applications that allow you to cause an effect.

Creating this vital link from a portal to a Sage Enterprise business application is now possible through the Web Portal SDK. Available only from Sage Line 500/Line 200 V5 onwards, Web Portal SDK allows both the Sage GUI client and Sage Web Client to be run from any COM compliant portal environment meaning that you can easily integrate Sage business applications into the most popular commercial portal products. And running the Sage application through Web Portal SDK doesn't need a further login as this is all managed for you with a secure environment within the Web Portal SDK.

Web Portal SDK

Key Features

- The capability within Sage Line 500/Line 200 V5 to allow development of Webbased corporate portals utilising Sage Enterprise applications.
- The ability to launch the Sage Line 500/Line 200 GUI Client and Web Client with no additional logon required.
- Secure and validated access to Sage Enterprise applications and options using a secure Windows based repository.
- The ability to define access rights to Sage Enterprise applications down to individual users or at a group or role based level through the Sage Enterprise application.
- The components provide a 'Plug & Play' architecture for complete integration with existing ASP based Websites.
- Support for Microsoft Internet Explorer.
- Installed by simple Install Shield.

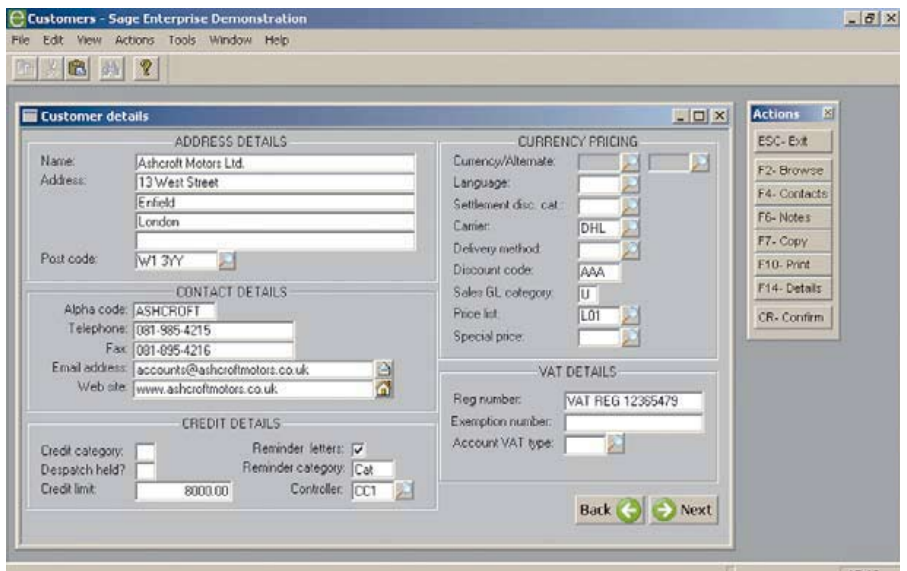
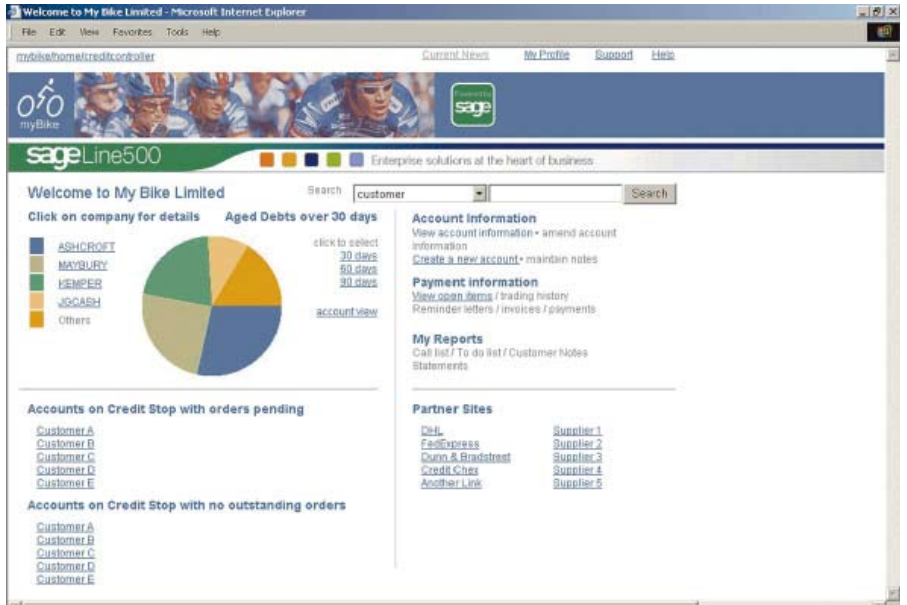
Web Portal

Key Benefits

- Simple foundation for supplementing existing Portals with Sage Enterprise applications.
- Run individual Sage Enterprise applications in a web environment.

- Secure, centralised management and control of access rights to Sage Enterprise Solutions applications.
- Reduction of Web application development costs.
- Central control and management of access via the Web Client Staging Point.
- Improvements of internal/external team communication and effectiveness.

Example of a business portal utilising the Sage Web Portal SDK



PINNACLE

Computing Solutions

Talk to us!
 t: UK 0845 120 0064 / ROI: 01 419 8990
 e: pinnacle@pinnacle-online.com
 w: www.pinnacle-online.com

